

**REVIEWED AND APPROVED FOR SEDIMENT CONTROL AND STORMWATER MANAGEMENT UNDER SECTIONS 4-306 AND 4-205**  
 BY: COLLIN HILTNER  
 DATE: MARCH 16, 2026  
 MARYLAND DEPARTMENT OF THE ENVIRONMENT  
 SEDIMENT & STORMWATER PLAN REVIEW DIVISION

**mk**  
 Consulting Engineers, LLC  
 1801 Porter Street, Suite 401  
 Baltimore, MD 21230  
 Ph: (667) 308-6193  
 Email: admin@mkceng.com

**BALTIMORE CITY COLLEGE RENOVATIONS PHASE 1**  
 3220 The Alameda, Baltimore, MD 21218

**OWNER**  
 MAYOR & CITY COUNCIL  
 100 N. HOLLIDAY STREET, ROOM 250  
 BALTIMORE, MD 21202  
 MAYOR@BALTIMORECITY.GOV  
 (410) 396-4900

**DEVELOPER /APPLICANT**  
 MARYLAND STADIUM AUTHORITY  
 610 BALTIMORE CITY PUBLIC SCHOOLS  
 351 WEST CAMDEN STREET, SUITE 500  
 BALTIMORE, MD 21201  
 TMOORAN@MSTAD.COM  
 (410) 233-4150

**100% CONSTRUCTION DOCUMENTS**



I CERTIFY THAT THESE DOCUMENTS WERE PREPARED OR APPROVED BY ME, AND THAT I AM A DULY LICENSED ENGINEER UNDER THE LAWS OF THE STATE OF MARYLAND. LICENSE NUMBER: 51966. EXPIRATION DATE: 09/07/2027.

**MDE #: 25-SF-0118**

NO.	REVISION	DATE

**PLOT PLAN**

Issue Date: 10/10/2025  
 Sheet Number: **C1.00**

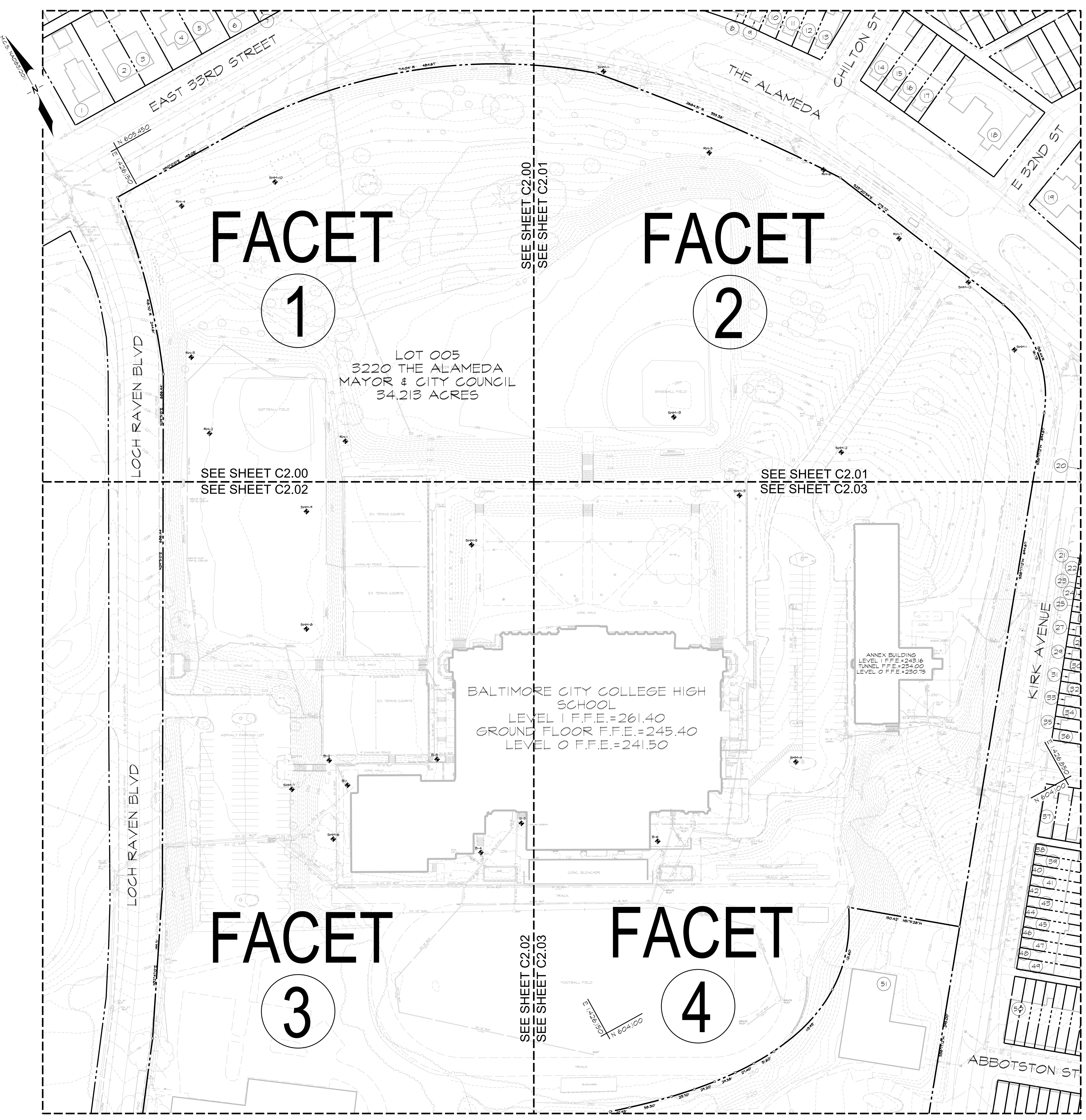
Sheet No. In Set: Total No. Sheets:  
 Project Number: 232301.0 PSC NO: L30F110  
 Drawn By: APW/IKK  
 Checked By: RP

**SITE DATA**

SITE ADDRESS: 3220 THE ALAMEDA, BALTIMORE, MD 21218  
 OWNER: MAYOR & CITY COUNCIL, BALTIMORE CITY COLLEGE, 200 E. NORTH AVENUE, SITE 407A, BALTIMORE 21202  
 PROPERTY REFERENCE: WARD 9, SECTION 17, BLOCK 4159B, LOT 005  
 TOTAL LOT/SITE AREA: 34.213 AC.  
 TOTAL LIMIT OF DISTURBANCE: 527,443 S.F. OR 12.11 AC.  
 COUNCILMANIC DISTRICT: 14TH DISTRICT  
 EXISTING / PROPOSED USE: HIGH SCHOOL  
 ZONING: R-6  
 SETBACKS: FRONT 20 FEET, REAR 25 FEET, SIDE 15 FEET, CORNER 20 FEET  
 PARKING REQUIRED: VEHICLE PARKING: R-6 ZONING DISTRICT HIGH SCHOOL, 1 PER 4 EMPLOYEES ON PEAK SHIFT + 1 PER 50 STUDENTS BASED ON MAXIMUM STUDENT CAPACITY. BICYCLE PARKING: R-6 ZONING DISTRICT HIGH SCHOOL, 1 PER 20 EMPLOYEES ON PEAK SHIFT + 1 PER 50 STUDENTS BASED ON.  
 CRITICAL AREA: SITE IS NOT LOCATED WITHIN THE CHESAPEAKE BAY CRITICAL AREA.  
 FLOODPLAIN INFORMATION: THE SITE IS NOT LOCATED WITHIN THE 100 YEAR FLOODPLAIN AND DELINEATED ON FEMA FLOOD INSURANCE RATE MAP 240807001F DATED 8/16/21. THE SITE IS LOCATED IN ZONE X WHICH MEANS AN AREA DETERMINED TO BE OUTSIDE THE 0.2% ANNUAL CHANCE FLOODPLAIN. A REVIEW OF THE MARYLAND DEPARTMENT OF NATURAL RESOURCES (DNR) MAPPING INDICATED THAT NO ON-SITE WETLANDS OR STREAMS EXIST ON THE SITE.  
 WATERSHED: SITE IS LOCATED WITHIN THE BALTIMORE HARBOR WATERSHED.

**SHEET INDEX**

SHEET#	SHEET NAME
C1.00	GENERAL NOTES
C1.01	EXISTING CONDITIONS & DEMOLITION PLAN - FACET 1
C1.02	EXISTING CONDITIONS & DEMOLITION PLAN - FACET 2
C1.03	EXISTING CONDITIONS & DEMOLITION PLAN - FACET 3
C1.04	EXISTING CONDITIONS & DEMOLITION PLAN - FACET 4
C1.05	OVERALL SITE AND GRADING PLAN
C1.06	SITE 1 GRADING PLAN - FACET 1
C1.07	SITE 1 GRADING PLAN - FACET 2
C1.08	SITE 1 GRADING PLAN - FACET 3
C1.09	SITE 1 GRADING PLAN - FACET 4
C1.10	SITE 2 DETAILS
C1.11	SITE 2 DETAILS
C1.12	SITE 2 DETAILS
C1.13	SITE 2 DETAILS
C1.14	SITE 2 DETAILS
C1.15	SITE 2 DETAILS
C1.16	SITE 2 DETAILS
C1.17	SITE 2 DETAILS
C1.18	SITE 2 DETAILS
C1.19	SITE 2 DETAILS
C1.20	SITE 2 DETAILS
C1.21	SITE 2 DETAILS
C1.22	SITE 2 DETAILS
C1.23	SITE 2 DETAILS
C1.24	SITE 2 DETAILS
C1.25	SITE 2 DETAILS
C1.26	SITE 2 DETAILS
C1.27	SITE 2 DETAILS
C1.28	SITE 2 DETAILS
C1.29	SITE 2 DETAILS
C1.30	SITE 2 DETAILS
C1.31	SITE 2 DETAILS
C1.32	SITE 2 DETAILS
C1.33	SITE 2 DETAILS
C1.34	SITE 2 DETAILS
C1.35	SITE 2 DETAILS
C1.36	SITE 2 DETAILS
C1.37	SITE 2 DETAILS
C1.38	SITE 2 DETAILS
C1.39	SITE 2 DETAILS
C1.40	SITE 2 DETAILS
C1.41	SITE 2 DETAILS
C1.42	SITE 2 DETAILS
C1.43	SITE 2 DETAILS
C1.44	SITE 2 DETAILS
C1.45	SITE 2 DETAILS
C1.46	SITE 2 DETAILS
C1.47	SITE 2 DETAILS
C1.48	SITE 2 DETAILS
C1.49	SITE 2 DETAILS
C1.50	SITE 2 DETAILS
C1.51	SITE 2 DETAILS
C1.52	SITE 2 DETAILS
C1.53	SITE 2 DETAILS
C1.54	SITE 2 DETAILS
C1.55	SITE 2 DETAILS
C1.56	SITE 2 DETAILS
C1.57	SITE 2 DETAILS
C1.58	SITE 2 DETAILS
C1.59	SITE 2 DETAILS
C1.60	SITE 2 DETAILS
C1.61	SITE 2 DETAILS
C1.62	SITE 2 DETAILS
C1.63	SITE 2 DETAILS
C1.64	SITE 2 DETAILS
C1.65	SITE 2 DETAILS
C1.66	SITE 2 DETAILS
C1.67	SITE 2 DETAILS
C1.68	SITE 2 DETAILS
C1.69	SITE 2 DETAILS
C1.70	SITE 2 DETAILS
C1.71	SITE 2 DETAILS
C1.72	SITE 2 DETAILS
C1.73	SITE 2 DETAILS
C1.74	SITE 2 DETAILS
C1.75	SITE 2 DETAILS
C1.76	SITE 2 DETAILS
C1.77	SITE 2 DETAILS
C1.78	SITE 2 DETAILS
C1.79	SITE 2 DETAILS
C1.80	SITE 2 DETAILS
C1.81	SITE 2 DETAILS
C1.82	SITE 2 DETAILS
C1.83	SITE 2 DETAILS
C1.84	SITE 2 DETAILS
C1.85	SITE 2 DETAILS
C1.86	SITE 2 DETAILS
C1.87	SITE 2 DETAILS
C1.88	SITE 2 DETAILS
C1.89	SITE 2 DETAILS
C1.90	SITE 2 DETAILS
C1.91	SITE 2 DETAILS
C1.92	SITE 2 DETAILS
C1.93	SITE 2 DETAILS
C1.94	SITE 2 DETAILS
C1.95	SITE 2 DETAILS
C1.96	SITE 2 DETAILS
C1.97	SITE 2 DETAILS
C1.98	SITE 2 DETAILS
C1.99	SITE 2 DETAILS
C1.00	SITE 2 DETAILS
C1.01	OVERALL LANDSCAPE PLAN
C1.02	LANDSCAPE PLAN - FACET 1
C1.03	LANDSCAPE PLAN - FACET 2
C1.04	LANDSCAPE PLAN - FACET 3
C1.05	LANDSCAPE PLAN - FACET 4
C1.06	PLANTING DETAILS
C1.07	PLANTING SCHEDULE
C1.08	PLANTING NOTES AND CERTIFICATIONS
C1.09	FOREST STAND DELINEATION
C1.10	FOREST CONSERVATION PLAN



**OVERALL EXISTING CONDITIONS PLAN**  
 SCALE: 1" = 60'

NOTE:  
 1. FOR GENERAL NOTES SEE SHEET C1.01  
 2. FOR DEMOLITION NOTES SEE SHEET C1.01  
 3. SEE C1.01 FOR NEIGHBORING PROPERTY LIST

